

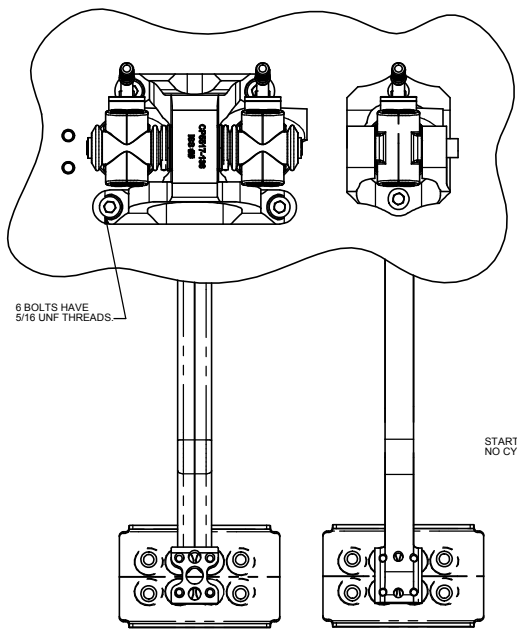
# A0 INSTALLATION DRAWING

IF THIS DOCUMENT IS PRINTED IN HARD COPY, IT IS FOR INFORMATION USE ONLY AND THEREFORE IS NOT SUBJECT TO UPDATING CONTROLS. ALWAYS REFER TO SOLIDWORKS VIEWER FOR LATEST ISSUE

FIRST ANGLE PROJECTION

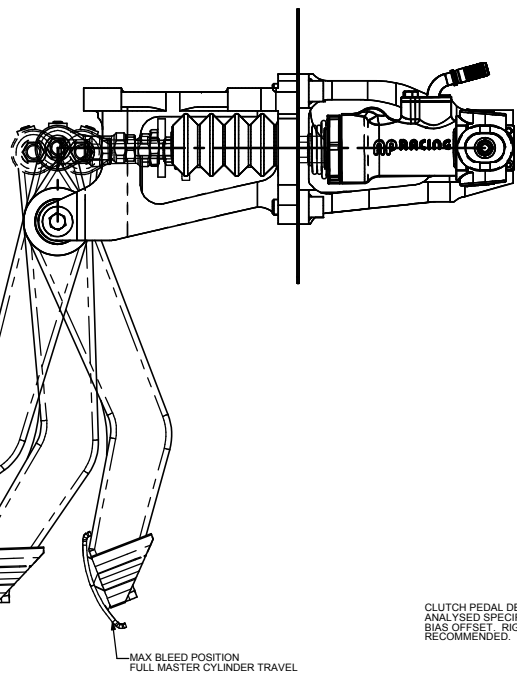
THIS DRAWING IS CONFIDENTIAL AND IS SUPPLIED ON THE EXPRESS CONDITION THAT IT SHALL NOT BE LOANED OR COPIED OR DISCLOSED TO ANY OTHER PERSON OR USED FOR ANY OTHER PURPOSE WITHOUT THE WRITTEN CONSENT OF AP RACING LTD.

**AP RACING**  
 AP Racing  
 Wheler Road  
 Coventry  
 CV3 4LB  
 Tel: +44 024 7663 9595  
 Fax: +44 024 7663 9559  
 e-mail: sales@aprac.com  
 © AP Racing Ltd. 2005 Web site: HTTP://www.aprac.com



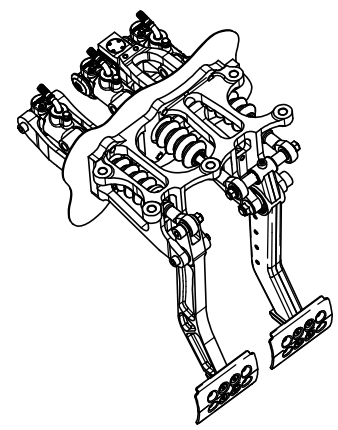
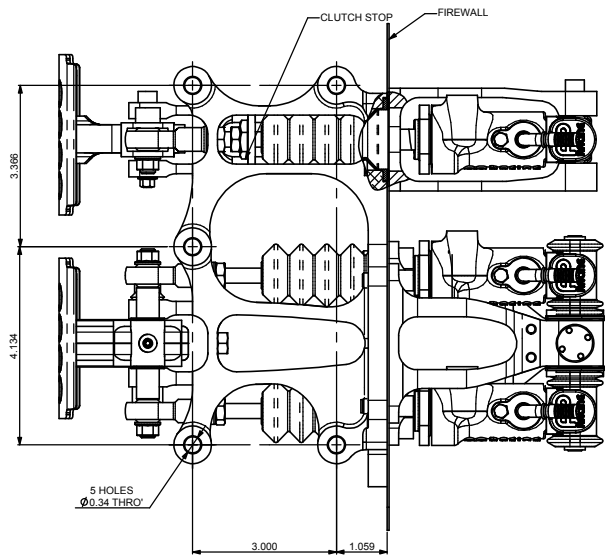
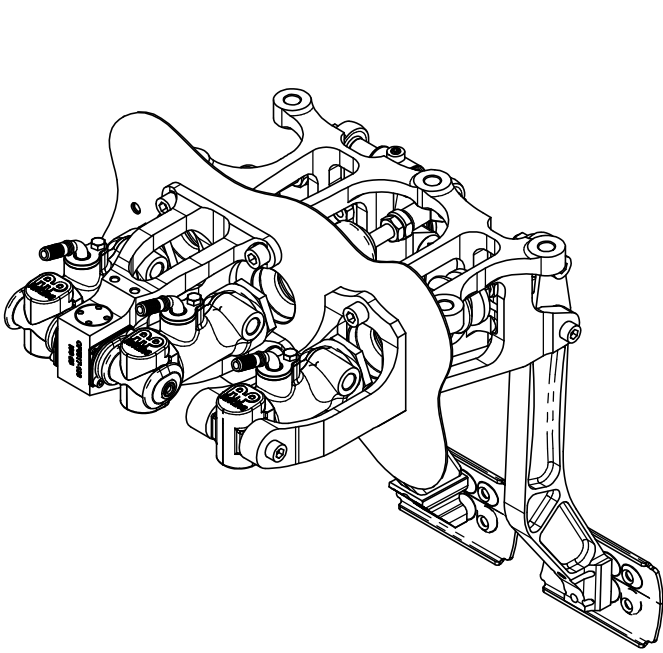
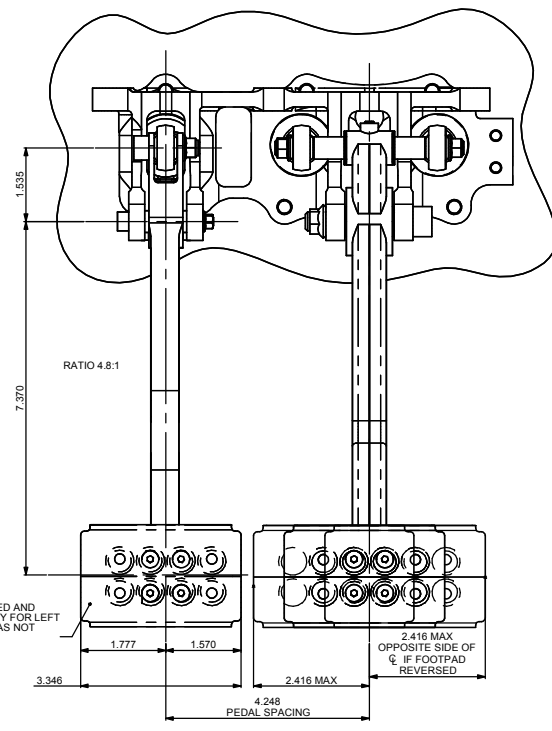
START POSITION  
NO CYLINDER TRAVEL

MAX BRAKE POSITION  
1/2 MASTER CYLINDER TRAVEL



MAX BLEED POSITION  
FULL MASTER CYLINDER TRAVEL

CLUTCH PEDAL DESIGNED AND ANALYSED SPECIFICALLY FOR LEFT BIAS OFFSET. RIGHT BIAS NOT RECOMMENDED.



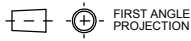
GENERAL DESCRIPTION:  
 THIS IS CP5517-1 PEDAL BOX ASSEMBLY. THE PEDAL BOX FEATURES A STEEL FABRICATED BRAKE PEDAL AND MACHINED ALUMINIUM CLUTCH PEDAL. THE PEDAL BOX UTILISES THE NEW HIGH EFFICIENCY CYLINDERS AND LOW FRICTION BALANCE BAR ASSEMBLY. THE PEDAL BOX ALSO FEATURES A CLUTCH STOP NUT THAT USES THE BASE PLATE TO RESTRICT TRAVEL. THE PEDAL BOX USES 4 MAIN SEPARATE SECTIONS THAT ENABLE KEY COMPONENTS TO BE REMOVED WITHOUT REMOVING THE WHOLE PEDAL BOX FROM THE VEHICLE. RUBBER BELLOWS ARE USED TO SEAL THE FIREWALL. THE PEDAL BOX USES BALL BEARINGS TO REDUCE LOSSES IN THE PIVOTS.

Alterations		Date	Particulars	Zone	Issue
1	18/12/2003	FIRST ISSUE			CDA
2	12/08/2004	SHEET 3 ADDED	B5713		CDA
3	07/12/03	SPARES INFORMATION ADDED			CDA
3	12/09/2004	RUBBER BOOTS INFO ADDED			CDA
4	17/11/2004	SHEET 3			CDA
5	06/07/2005	SPARES SHEET UPDATED			CDA
5	06/07/2005	SHEET 3 CP5517-34 KIT ADDED			CDA
6	16/04/07	BRAKE AND CLUTCH PEDAL UPDATED. NEW PRESSED FOOTPADS ADDED			SAT
7	16/10/2008	BALANCE BAR AND EXTRAS UPDATED.			CDA

SCALE 1:1	SHEET 2 OF 3
DRAWN Steve Thomas	
APPROVED	
DERIVED FROM	
TITLE HIGH EFFICIENCY UNDERSLUNG PEDAL BOX	
DRG NO.	CP5517-1

# A0 INSTALLATION DRAWING

IF THIS DOCUMENT IS PRINTED IN HARDCOPY, IT IS FOR INFORMATION USE ONLY AND THEREFORE IS NOT SUBJECT TO UPDATING CONTROLS. ALWAYS REFER TO SOLIDWORKS VIEWER FOR LATEST ISSUE

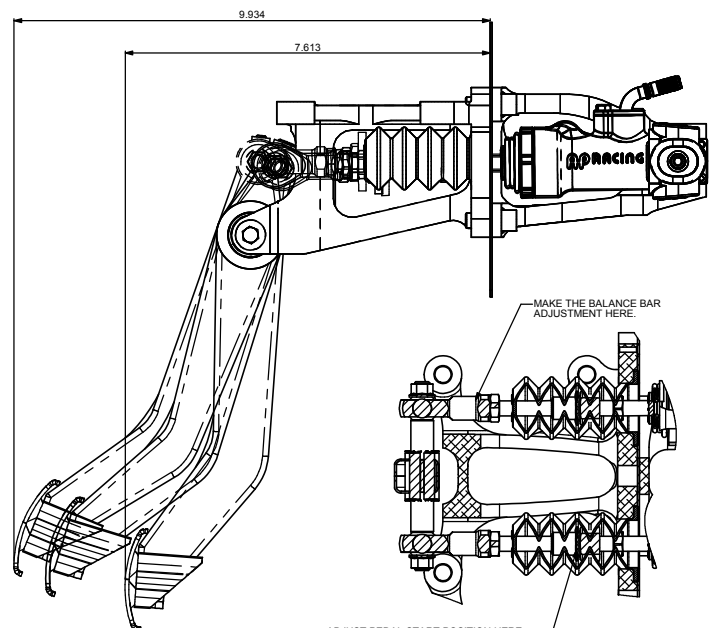


THIS DRAWING IS CONFIDENTIAL AND IS SUPPLIED ON THE EXPRESS CONDITION THAT IT SHALL NOT BE LOANED OR COPIED OR DISCLOSED TO ANY OTHER PERSON OR USED FOR ANY OTHER PURPOSE WITHOUT THE WRITTEN CONSENT OF AP RACING LTD.

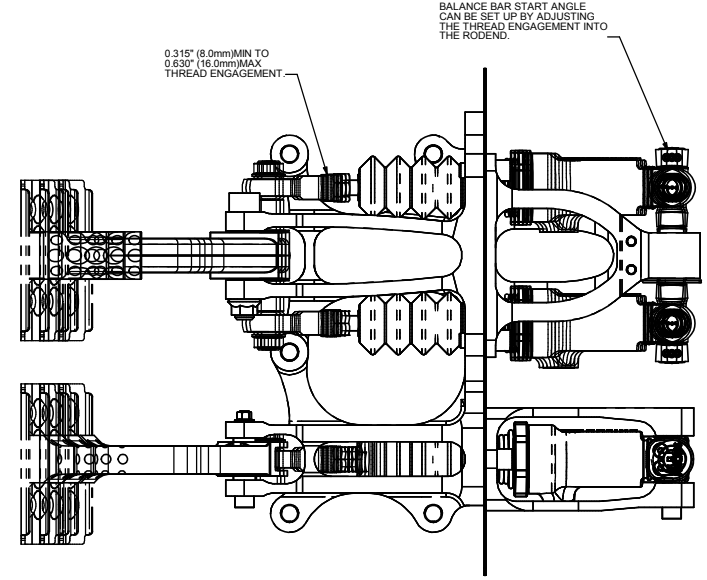
**AP RACING**  
 AP Racing  
 Wheeler Road  
 Coventry  
 CV3 4LB  
 Tel: +44 024 7663 9595  
 Fax: +44 024 7663 9559  
 e-mail: sales@apracings.co.uk  
 Web site: HTTP://www.apracings.com

© AP Racing Ltd. 2005

APPROXIMATE VALUES



THIS VIEW INDICATES THE PEDALS START POSITION ADJUSTMENT BY ALTERING THE THREAD ENGAGEMENT AT THE POINT INDICATED. YOU KEEP THE BALANCE BAR ADJUSTMENT AND THE PEDAL POSITION ADJUSTMENT SEPARATE.



WE RECOMMEND THAT NO MORE THAN 0.1975 (5mm) ADJUSTMENT EACH WAY, AS THIS WILL LEAD TO INEFFICIENCY IN THE BALANCE BAR.

HIGH EFFICIENCY MASTER CYLINDERS CP6465.

BELLOWS TO SEAL THE FIREWALL MADE FROM FIRE RETARDANT MATERIAL.

BALL BEARINGS IN BOTH PEDALS TO REDUCE LOSSES AND TO GIVE A SMOOTH PEDAL.

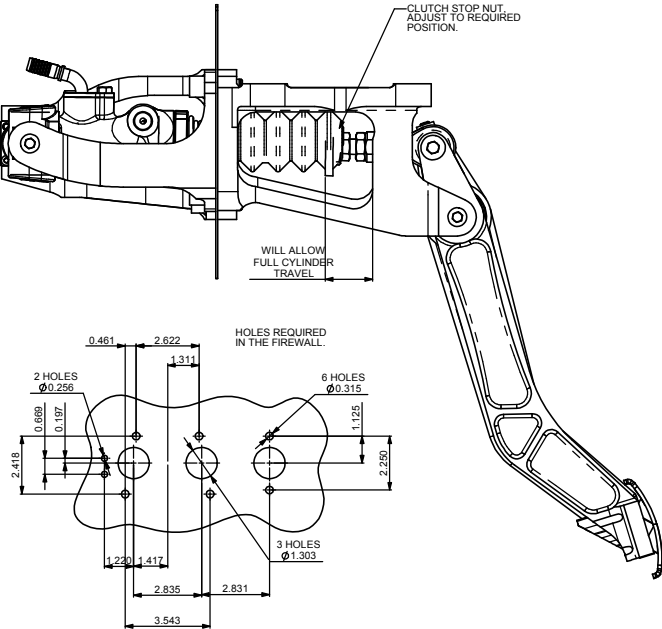
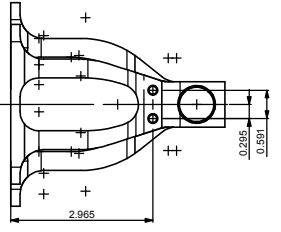
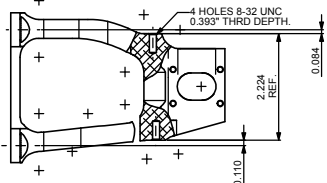
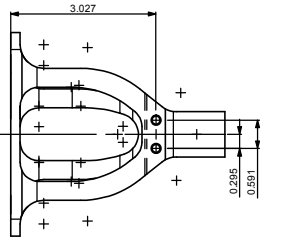
4 HOLES TO FIX A DIRT SHIELD. INLETS SOLD SEPARATELY. CP6465-10.

2 HOLES 1/4" UNF FOR THROTTLE ATTACHMENT. CP6517-10

WE RECOMMEND THAT THE LINE BETWEEN THESE TWO POINTS IS PERPENDICULAR TO THE MASTER CYLINDER CENTRE LINE WHEN AT MAX BRAKE PRESSURE.

STEEL PEDAL AND FOOTPAD TO MEET REGULATIONS.

THIS PEDAL BOX HAS METRIC THREAD, UNLESS OTHERWISE INDICATED.

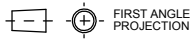


Alterations		
Date & No.	Particulars	Zone
	SEE SHEET 1 FOR ISSUE LEVEL	

SCALE 1:1	SHEET 2 OF 3
DRAWN Steve Thomas	
APPROVED	
DERIVED FROM	
TITLE HIGH EFFICIENCY UNDERSLUNG PEDAL BOX	
DRG NO. CP5517-1	

# A0 INSTALLATION DRAWING

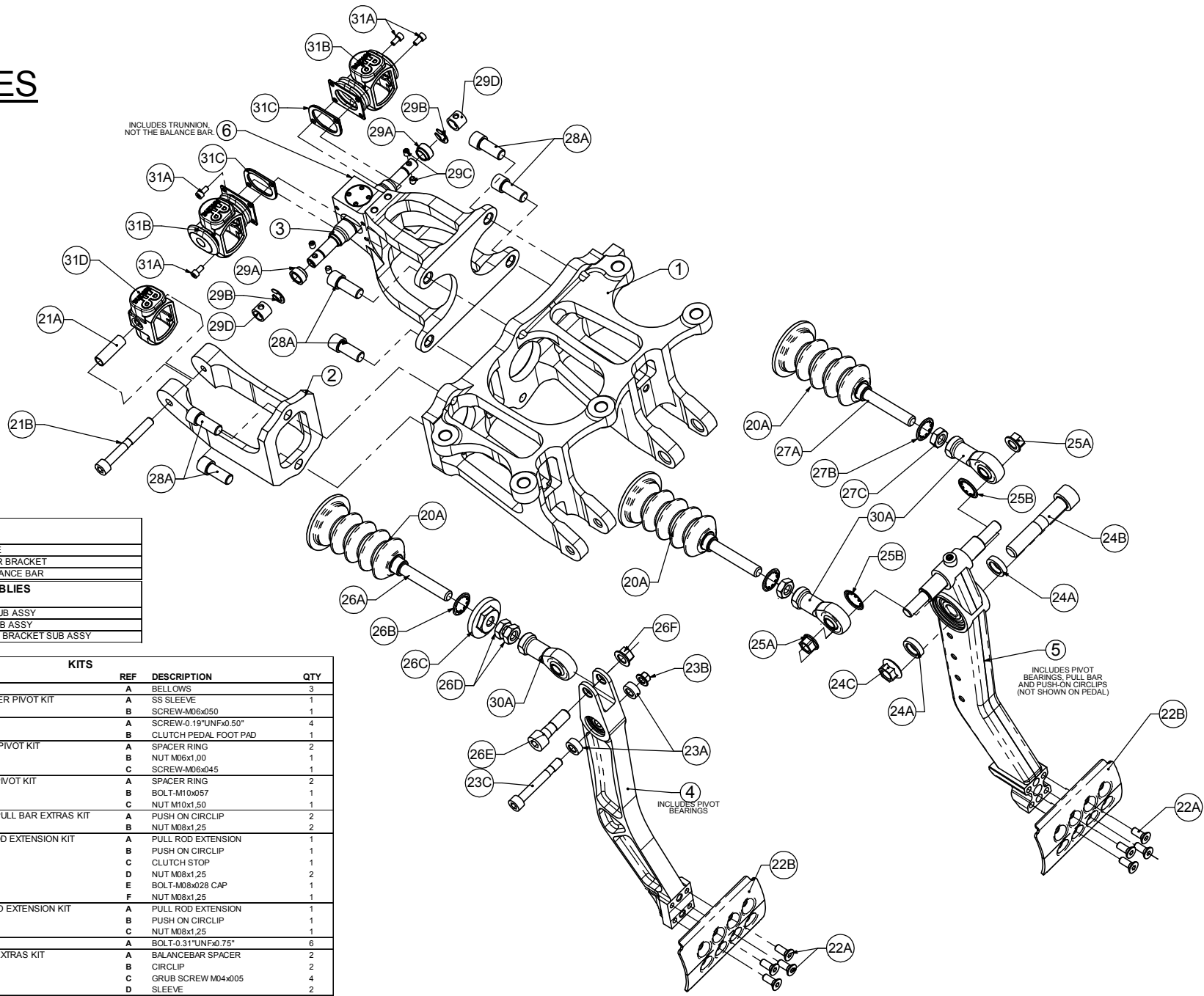
IF THIS DOCUMENT IS PRINTED IN HARD COPY, IT IS FOR INFORMATION USE ONLY AND THEREFORE IS NOT SUBJECT TO UPDATING CONTROLS. ALWAYS REFER TO SOLIDWORKS VIEWER FOR LATEST ISSUE



THIS DRAWING IS CONFIDENTIAL AND IS SUPPLIED ON THE EXPRESS CONDITION THAT IT SHALL NOT BE LOANED OR COPIED OR DISCLOSED TO ANY OTHER PERSON OR USED FOR ANY OTHER PURPOSE WITHOUT THE WRITTEN CONSENT OF AP RACING LTD.

**AP RACING**  
 AP Racing  
 Wheeler Road  
 Coventry  
 CV3 4LB  
 Tel: +44 024 7663 9595  
 Fax: +44 024 7663 9559  
 e-mail: sales@apracings.co.uk  
 © AP Racing Ltd. 2005 Web site: HTTP://www.apracings.com

## SPARES



PARTS		
REF	Pt No.	DESCRIPTION
1	CP5517-134	MAIN BASE PLATE
2	CP5517-104	CLUTCH CYLINDER BRACKET
3	CP5517-157	HEAVY DUTY BALANCE BAR

SUB ASSEMBLIES		
REF	Pt No.	DESCRIPTION
4	CP5517-148	CLUTCH PEDAL SUB ASSY
5	CP5517-149	BRAKE PEDAL SUB ASSY
6	CP5517-150	BRAKE TRUNNION BRACKET SUB ASSY

KITS					
REF	Pt No.	DESCRIPTION	REF	DESCRIPTION	QTY
20	CP5517-20	BELLOWS KIT	A	BELLOWS	3
21	CP5517-21	CLUTCH CYLINDER PIVOT KIT	A	SS SLEEVE	1
			B	SCREW-M06x050	1
22	CP5508-15	FOOTPAD KIT	A	SCREW-0.19"UNFx0.50"	4
			B	CLUTCH PEDAL FOOT PAD	1
23	CP5517-24	CLUTCH PEDAL PIVOT KIT	A	SPACER RING	2
			B	NUT M06x1.00	1
			C	SCREW-M06x045	1
24	CP5517-25	BRAKE PEDAL PIVOT KIT	A	SPACER RING	2
			B	BOLT-M10x057	1
			C	NUT M10x1.50	1
25	CP5517-26	BRAKE PEDAL PULL BAR EXTRAS KIT	A	PUSH ON CIRCLIP	2
			B	NUT M08x1.25	2
26	CP5517-27	CLUTCH PULLROD EXTENSION KIT	A	PULL ROD EXTENSION	1
			B	PUSH ON CIRCLIP	1
			C	CLUTCH STOP	1
			D	NUT M08x1.25	2
			E	BOLT-M08x028 CAP	1
			F	NUT M08x1.25	1
27	CP5517-28	BRAKE PULLROD EXTENSION KIT	A	PULL ROD EXTENSION	1
			B	PUSH ON CIRCLIP	1
			C	NUT M08x1.25	1
28	CP5517-29	BOLT KIT	A	BOLT-0.31"UNFx0.75"	6
			B	BALANCEBAR SPACER	2
			C	CIRCLIP	2
			D	GRUB SCREW M04x005	4
29	CP5517-30	BALANCE BAR EXTRAS KIT	C	GRUB SCREW M04x005	4
			D	SLEEVE	2
30	CP5517-31	ROD END KIT	A	ROD END M8x1.25	3
31	CP5517-32	BOOT KIT	A	SCREW- No 5UNFx0.25"	4
			B	RUBBER BOOT-TRUN BB ASSY	2
			C	PLATE-CLAMP RUBBER BOOT	2
			D	RUBBER BOOT-CLUTCH CYL	1

THE CP5516-34 BALANCE BAR TRUNNION SPARES KIT WILL ENABLE YOU TO REPLACE THE INTERNALS OF THE TRUNNION. THE KIT DOES NOT INCLUDE THE CAP REMOVAL TOOL. IF YOU WISH TO ORDER ONE, THE PART NUMBER IS CP5516-144.

Alterations		
Date & No.	Particulars	Zone
	SEE SHEET 1 FOR ISSUE LEVEL	

SCALE 1:1	SHEET 2 OF 3
DRAWN Steve Thomas	
APPROVED	
DERIVED FROM	
TITLE HIGH EFFICIENCY UNDERSLUNG PEDAL BOX	
DRG NO. CP5517-1	